



## The PGU 9900<sup>neo</sup>

Our first smart AI-powered powRgrip® Clamping Unit

# The PGU 9900<sup>neo</sup>

The first AI supervised Tool Clamping in the World

## INTELLIGENT

Get instant confirmation about clamping power and runout with ULTRA Press.

## REAL-TIME

Useful data information about activities such as technical performance, statistics and economical figures.

## AS YOU DESIRE

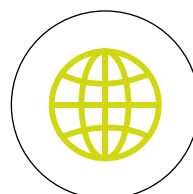
Buy, rent or pay as you use, reflecting your needs in your daily production.



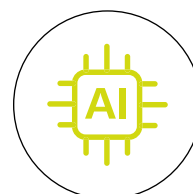
Fulfilled clamping, ensuring highest clamping force at lowest TIR runout – Guaranteed!



Touchscreen display to interact, access data and get video tutorials



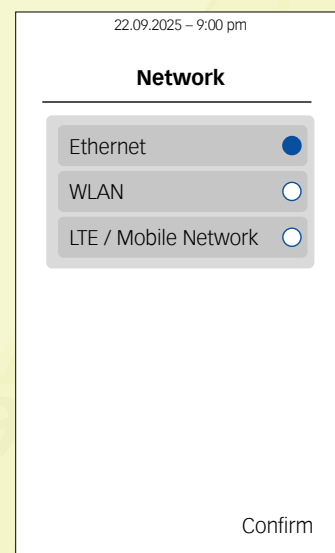
Go online by Ethernet, Wi-Fi or LTE/Mobile Network and access your personal dashboard to manage stats, permission groups, charts and cycle information



AI with deep learning technology for best data prediction supported by the REGO-FIX cloud service



Home screen



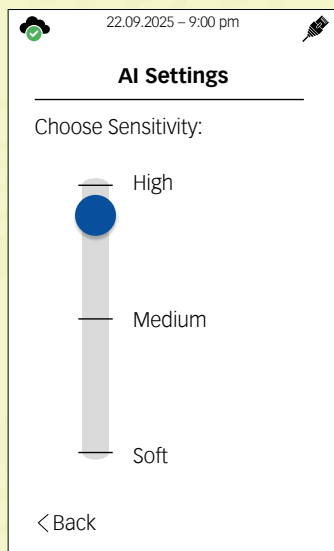
Connectivity

## What are the key factors for a reliable tool clamping?

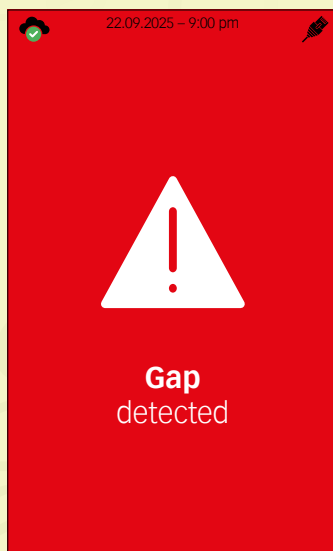
In any toolholding system, clamping forces (transferable torque) as well as runout (TIR) are key essentials for a reliable clamping. Failing will occur in tool pull-outs, bad surface finishing, excessive cutting tool wear and an overall instable machining process. There are multiple options to properly clamp your tool, such as ER, press fit's, hydraulic, heat shrink or milling chucks as examples. Every system comes with inherent benefits and drawback rooted in its mechanical design. And all provide theoretical indications about clamping force and runout. But how we even measure if these values are properly fulfilled as suggested by the manufactures?

## Introducing ULTRA Press

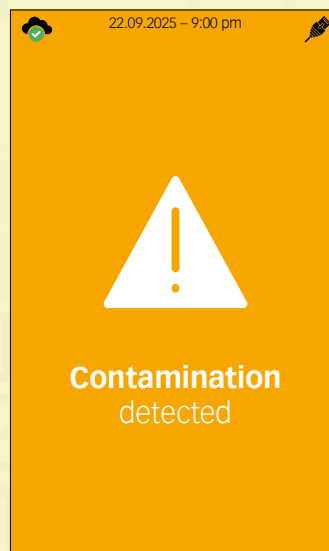
REGO-FIX wants to give you the required reassurance, by introducing ULTRA Press. Our new PGU9900<sup>neo</sup> will measure instantaneously the required pressure during clamping of the tool. The process is supervised by AI in real-time, the data stored in a smart cloud, giving feedback in seconds, if the cutting tool is really 100% securely clamped in your toolholder. If your system is not properly cleaned, has been damaged or other factors influencing the correct clamping, the system will let you know. The entire process takes less than 10 seconds and will give full confidence about the clamping force and the system runout – confirmed by the ULTRA Press Icon. A seal of approval confirming the clamping quality. Every time, with every clamp.



Sensitivity



Warning



Notice



Confirmation

### Why is this important?

Don't waste your expensive cutting tools with runout problems. Don't risk your workpiece because of possible tool pull-outs. Supervise every tool change knowing 100% of all components involved, the tool, the collet and the holder are accurately aligned to offer the reassurance you need – for maximum performance.



# Go-To-Market Models:



## BUY IT

Buy the PGU 9900<sup>neo</sup> clamping unit with full cloud access, including integrated AI functionality. The online cloud service is included for 36 months after purchase and can easily be extended as needed.



## RENT IT

Rent the PGU 9900<sup>neo</sup> for an attractive monthly fee with full cloud access and included AI functionality through the 36 month rental period. Afterward, you chose: extend you rental, purchase the machine at its depreciated value or simply return it to REGO-FIX.



## PAY-PER-USE

Buy a minimum amount of powRgrip<sup>®</sup> toolholders and collets and receive the machine with full cloud access and included AI functionality for free! You only pay per use, based on the number of clamp and unclamp cycles. Each quarter, you receive a detailed usage report, billed transparently by pressings.



600015076\_powRgrip\_PGU9900neo\_Flyer ENG 2508