

# The new reCool® Hi-Speed: Upgrade your spindle to coolant through for high speed

## EASY

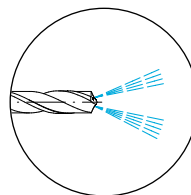
Existing high RPM spindles can now easily be converted to through coolant

## FAST

Improved design providing higher speeds for high-speed and high-frequency spindles

## reCool® Hi-Speed

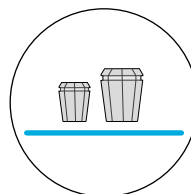
The patented solution to upgrade spindles to internal coolant tools – Smart retrofit!



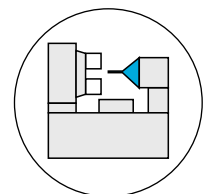
Upgrade to internal coolant easily



Designed for high speed tools up to 40'000 rpm



Available in sizes ER(M) 11 & 16 shank 3-10mm




Optimized for highspeed & high-frequency spindles


**Get your free reCool® test now!**

Learn more at [try.rego-fix.ch/recool/retrofit](http://try.rego-fix.ch/recool/retrofit)

## Upgrade high-speed spindles to internal cooling with reCool®



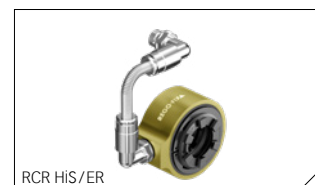
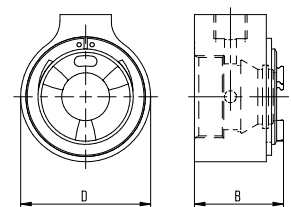
**Before**



**After**

- // For high speed spindles
- // Maximum RPM 40000 min<sup>-1</sup>
- // Tools shank diameter 3–10 mm
- // For ER 11 and ER 16 including ERM (Mini)
- // Maximum pressure 100 bar
- // Ceramic coating for reduced friction
- // Suited for emulsion and oil
- // To be used with KS/DS coolant disks

Type	Part no.	Dimensions [mm]		Thread	Accessory
		B	D		Wrench
<b>Set RCR Hi-S/ER (for emulsion- and oil-based coolants)</b>					
SET RCR Hi-S/ER 11	3711.60000	16.5	21.75	M 14 x 0.75	E 11 AX
SET RCR Hi-S/ER 16	3716.60000	24.5	34	M 22 x 1.5	E 16 AX
<b>RCR Hi-S/ER nut (for emulsion- and oil-based coolants)</b>					
RCR Hi-S/ER 11	3711.69000	16.5	21.75	M 14 x 0.75	E 11 AX
RCR Hi-S/ER 16	3716.69000	24.5	34	M 22 x 1.5	E 16 AX
<b>Set RCR Hi-S/ERM (for emulsion- and oil-based coolants)</b>					
SET RCR Hi-S/ERM 11	3711.70000	16.5	21.75	M 13 x 0.75	E 11 AX
SET RCR Hi-S/ERM 16	3716.70000	24.5	31	M 19 x 1	E 16 AX
<b>RCR Hi-S/ERM nut (for emulsion- and oil-based coolants)</b>					
RCR Hi-S/ERM 11	3711.79000	16.5	21.75	M 13 x 0.75	E 11 AX
RCR Hi-S/ERM 16	3716.79000	24.5	31	M 19 x 1	E 16 AX



### Included in set RCR Hi-S/ER & ERM

Type	Qty.
RCR Hi-S 11–16	1
SET RHS-100	1
SET RVG-100 1/8"–0°	2
SET RVA-100 1/8"–90°	2