



WMH-RF 45°



REGO-FIX▲



Operating manual

WMH-RF 45°

Description: WMH-RF 45° / toolholding fixture

Types: **WMH** main body 45°

WA / HSK adapter for HSK

WA / SK adapter for SK / BT and CAT

WA / C adapter for CAPTO

Manufacturer: REGO-FIX AG, Obermattweg 60, CH-4456 Tenniken, Switzerland

The operating manual must be kept for the entire period of use.

Table of contents

1. General information	4
Introduction	4
Intended use	4
Non-intended use	4
2. Safety instructions	5
General safety instructions	5
Special safety instructions	5
Obligation of the operator	7
3. Description of the toolholding fixture	8
Main body	8
4. Assembly and installation instructions	9
5. Operating instruction	10
Use of the toolholding fixture	10
Working positions	11
Exchange of the adapters	12
6. Disposal instructions	13

1. General information

Introduction

This toolholding fixture (after also referred to as “device”) is designed to pick up and adjust tools for machine tools. Tool adjustment is performed by turning and fixing the respective tool holder in various positions.

This operating manual describes the function, correct installation and safe handling of the toolholding fixture. This operating manual applies exclusively to the types specified on the cover sheet.

Before using the toolholding fixture, the safety and warning notes must be read.

Please observe the warning notes attached to the device. It is extremely important to follow these notes exactly! Damaged or missing notes must be replaced.

The operating manual must always be kept within easy reach at the place of use. The personnel responsible for working on the toolholding fixture must have read and understood the operating instructions before commissioning.

Intended use

This toolholding fixture is intended for holding and setting tools for machine tools.

The toolholding fixture may only be operated by trained qualified personnel.

Non-intended use

Any use of the toolholding fixture that deviates from or goes beyond the “intended use” is considered improper use and is prohibited.

Any other use requires prior consultation with the manufacturer.

This also includes the use of the toolholding fixture for other product dimensions.

In case of independent conversions and modifications to the toolholding fixture, any liability and warranty on the part of the manufacturer expires. Any modification to the device requires the approval and inspection by REGO-FIX AG.

The use of spare and wear parts from third-party suppliers can lead to risks. Only use original parts or parts that have been approved by the manufacturer.

2. Safety instructions

General safety instructions

DANGER



- // To avoid hazards due to careless use of the device by third parties, only one person may work on the device at a time.
- // This also applies to all possible work on the device except during installation.

WARNING



- // Indicates a possible dangerous situation.
- // If the information is not followed, the most serious bodily injuries (invalidity) can be the result.

Special safety instructions

Depending on the mounting taper (DIN / CAT BT or HSK), the height of the locking bolt holder must be adjusted for proper fit in the tool holder.

The height of the locking bolt holder in the adapter can be adjusted using two hexagon socket head screws.

The locking must be set and is relevant to safety. Without correct locking of the tool holder in the adapter, the tool holder can fall out.



1. Place the tool holder in the corresponding adapter.
2. Loosen the two screws so that the locking bolt holder can be moved easily.
3. Move the height of the locking bolt holder so that the clamping surface of the locking bolt rests on the intended surface of the gripper groove when it is extended.
4. Tighten the two screws again. The locking pin is used for additional positive locking of the spring-loaded locking bolt.

When using adapters without a locking bolt, the tool holder must be secured against falling out, for example by means of a clamping lever.

The tool holders are inserted from above into the mounting hole of the adapters and secured with a locking bolt. When inserting, the indexing bolt must be pulled outwards.

Afterwards, the indexing bolt must be secured with the locking pin in the direction of LOCK!

WARNING



Caution foot injury!

Before turning the tool downwards, always check whether the locking bolt is engaged and whether the locking pin is in position Lock. Otherwise, the tool holder may fall down and cause severe foot injuries.

INSTRUCTION



Always wear safety shoes in the vicinity of the device!



Obligation of the operator

The requirements of the EC Directive on the use of work equipment 2009/104/EC must be observed.

Only appropriately qualified personnel may work on this device. They must be familiar with all warnings and safety instructions contained in these operating instructions. The successful and safe operation of this equipment depends on its proper handling and operation.

Keep these operating instructions easily accessible. A copy must be given to each operator. Acknowledgement must be made in writing.

The devices may only be operated by trained and instructed personnel. The legally permissible minimum age must be observed. Responsibilities of the personnel for the use are to be clearly defined.

Personal protective equipment must be provided by the operator. Each employee is obliged to use this protective equipment properly.

Obligation of the personnel

It is required that only persons with appropriate qualifications work on this equipment.

The qualified personnel consists of skilled workers who are authorized to carry out the necessary activities due to their professional education, experience and training. They must be able to recognize potential hazards and take appropriate precautions.

The personnel must have a complete understanding of the warnings and safety instructions contained in these operating instructions. This requires the following steps:

- // Personnel must read, understand, and strictly follow the safety sections and safety instructions in this manual.
- // It is imperative that personnel comply with the basic occupational health and safety regulations and accident prevention measures.

In addition, knowledge of first aid measures and the locally available rescue facilities is necessary.

Always wear this personal protective equipment:



Safety shoes



Protective gloves

3. Description of the toolholding fixture

The REGO-FIX toolholding fixture consists of the WMH-RF 45° main body and the insertable adapters.

Main body

// For holding the various adapters, which are locked with a locking disc.

// The locking disc has two positions:

/ **Indexing**

Pull the locking disc up to the first stop and then turn the adapters to the desired position and lock them in place.

/ **Changing the adapters**

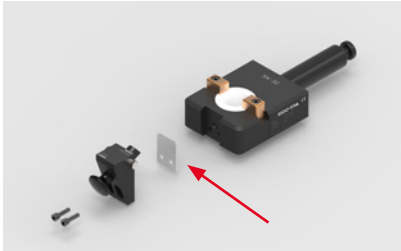
Pull the locking disc up to the second stop. Now the adapter can be pulled out of the main body.

Adapter

WA / SK for SK / BT and CAT tool holders

The WA are always set at the factory for the SK and CAT interface. If BT is used, the height of the locking mechanism must be adjusted. To do this, place a tool holder in the WA, loosen the two screws, place the locking mechanism in the gripper groove and secure with the screws.

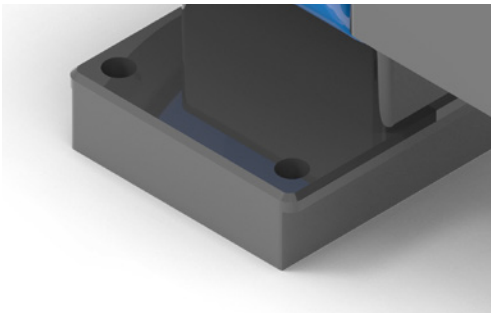
For BT30, the spacer plate between the adapter and the locking mechanism must be removed.



WA / HSK for HSK tool holders

WA / C for Capto tool holders

4. Assembly and installation instructions

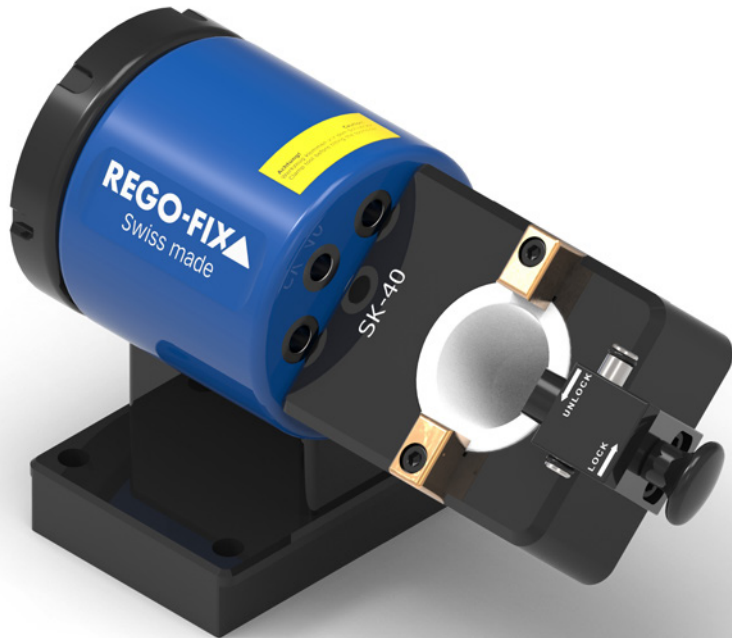


The WMH main body must be screwed to a table by means of 4 screws. If this is not possible, it can be clamped in a vice. When the WMH main body is clamped in the vice, make sure that it is clamped on the entire surface.

The shoulder in the base plate helps to clamp the WMH securely in a vice without tilting it.

5. Operating instruction

Use of the toolholding fixture



Working positions

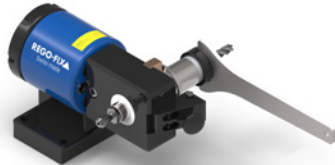
WARNING



Caution foot injury!

Before turning the tool downwards, always check whether the locking bolt is engaged and whether the locking pin is in position Lock.

Otherwise, the tool holder may fall down and cause severe foot injuries.



Vertical upwards:

Easy clamping and unclamping of the tools

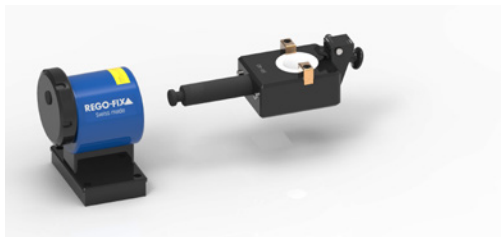
Horizontal left or right position:

Mounting of collet nut or dismounting of tools

Vertical down:

Assembly and disassembly of the pull studs

Exchange of the adapters



Mounting the adapters

Push the adapter into the main body up to the first stop. Then lift the locking disk all the way up and push the adapter to the second stop. As soon as the adapter is at the stop, push the locking disk down. The downward movement of the locking disk locks the adapter in the main body.

Indexing the adapter:

To rotate the adapter in 45° increments, the locking disk must be pushed up to the first position. This pushes the adapter a bit out of the base body and allows it to be rotated.

To lock the adapter again, the locking disk must be pushed down.



6. Disposal instructions

Unserviceable devices must be disposed of as recyclable scrap metal.

The country-specific regulations applicable at the time of disposal must be observed.

