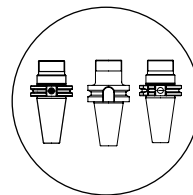




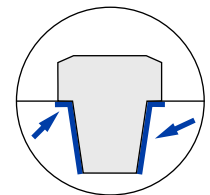
REGO-FIX BIG PLUS® – The original dual contact system; licensed by BIG Daishowa

REPEATABLE

Best repeatability for steep taper holders.



BT+ and BBT for ER / PG
NEW: SK+ and CAT+



Dual contact: rigid and stiff

PRECISION

Most precise of all steep taper systems.

REGO-FIX BIG-PLUS®

Original BIG PLUS® licensed by BIG Daishowa.



Manufactured at our headquarters in Switzerland



Certified BIG PLUS® license

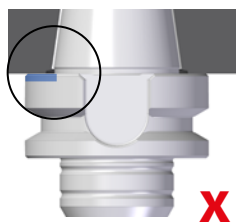
BIG PLUS® the most precise dual contact steep taper system

Basic concept The BIG PLUS® spindle system is based on the most current available standards in ASME B5.50, JIS B6339 and DIN 69871. A conventional steep taper tool holder is supported on a reference diameter called the gauge line, on the contrary, a BIG PLUS® tool holder is supported on the flange face, which brings remarkable improvements to rigidity.

The current market contains many suppliers of dual contact tooling who are not licensed for BIG PLUS®

Without the license, producers have neither the exclusive gauges nor dimensions and tolerances for the critical relationship of taper to flange. Only trust the original – Get REGO-PLUS!

Proper fit Distance between the taper gauge line and tool flange is the critical dimension for BIG PLUS®. Beware of dangerous copies and non-licensed imitations on the market!



Flange contact only

Limited or no taper contact

- // Poor runout accuracy
- // Severe chatter and vibration
- // Spindle damage
- // Limited stability



Non-licensed copies



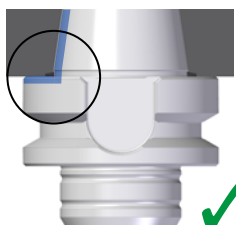
Taper contact only

No flange contact

- // Features of BIG PLUS® are voided
- // Works same as taper-only contact tooling
- // Medium stability



BT, CAT and SK



Simultaneous taper and flange fit

BIG-PLUS® surpasses other spindle concepts while offering interchangeability with existing machines and tool holders.

- // Premium finish and dimensional accuracy
- // Extended tool life
- // No surface corrosion due to heavy cutting
- // Excellent repeatability
- // 43 % more stability compared to taper contact toolholders



BT+, CAT+ and SK+

Certified REGO-FIX PLUS holders



BT+

Available for PG and ER XL holders on request



CAT+

Available for PG and ER XL holders on request



SK+

Available for PG and ER XL holders on request

REGO-PLUS
double contact

Certified

The BIG PLUS SYSTEM – licensed by BIG Daishowa – is manufactured at REGO-FIX in Switzerland under license according to BIG PLUS specifications.

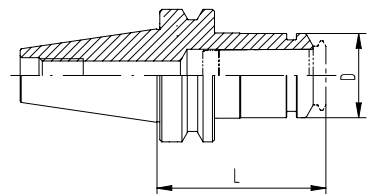
BT+ Collet holder licensed by BIG Daishowa

Type	Part no.	Dimensions [mm]		Accessoires
		D	L	FWR*
BT+ 30				
BT+30/PG 6 x 080 H	4130.70646	10	80	225
BT+30/PG 6 x 100 H	4130.70656	10	100	225
BT+ 30/PG 10 x 080 H	4130.71046	16	80	285
BT+ 30/PG 10 x 120 H	4130.71066	16	120	285
BT+ 30/PG 15 x 070 H	4130.71536	24	70	285
BT+ 30/PG 15 x 120 H	4130.71566	24	120	285
BT+ 30/PG 25 x 080 H	4130.72546	40	80	405
BT+ 30/PG 25 x 160 H	4130.72586	40	160	405 / 405

BT+ 40				
BT+ 40/PG 10 x 080 H	4140.71046	16	80	285
BT+ 40/PG 10 x 120 H	4140.71066	16	120	325
BT+ 40/PG 15 x 080 H	4140.71546	24	80	285
BT+ 40/PG 15 x 120 H	4140.71566	24	120	325
BT+ 40/PG 25 x 080 H	4140.72546	40	80	405
BT+ 40/PG 25 x 120 H	4140.72566	40	120	405
BT+ 40/PG 25 x 160 H	4140.72586	40	160	405 / 405
BT+ 40/PG 32 x 086 H	2140.73246	40	86	-

BT+ 50				
BT+ 50/PG 25 x 120 H	4150.72566	40	120	505
BT+ 50/PG 25 x 160 H	4150.72586	40	160	505 / 405

*Balancing rings H: Ready to accept balancing rings



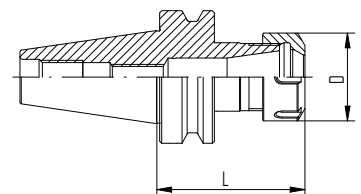
BT+ / PG (A+AD)

Type	Part no.	Dimensions [mm]		Accessoires
		D	L	FWR*
BT+ 30				
BT+ 30/ER 11 x 100 H	4130.11156	19	100	225
BT+ 30/ER 16 x 050	2130.11616	28	50	-
BT+ 30/ER 16 x 080 H	4130.11646	28	80	285
BT+ 30/ER 20 x 050	2130.12016	34	50	-
BT+ 30/ER 20 x 070 H	4130.12036	34	70	325
BT+ 30/ER 25 x 060 H	4130.12526	42	60	325
BT+ 30/ER 32 x 060	2130.13226	50	60	-

BT+ 40				
BT+ 40/ER 16 x 070 H	4140.11636	28	70	285
BT+ 40/ER 16 x 100 H	4140.11656	28	100	285
BT+ 40/ER 20 x 070 H	4140.12036	34	70	325
BT+ 40/ER 25 x 070 H	4140.12536	42	70	325
BT+ 40/ER 32 x 070 H	4140.13236	50	70	405
BT+ 40/ER 32 x 100 H	4140.13256	50	100	405
BT+ 40/ER 32 x 160 H	4140.13286	50	160	405 / 405

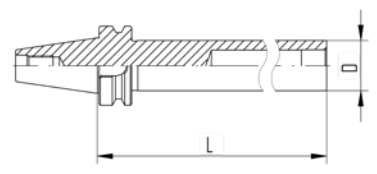
BT+ 50				
BT+ 50/ER 32 x 100 H	4150.13256	50	100	505
BT+ 50/ER 32 x 160 H	4150.13286	50	160	505 / 405

*Balancing rings H: Ready to accept balancing rings
Included in delivery: ER toolholders come with Hi-Q®/ER clamping nut.



BT+ / ER (A+AD)

Type	Part no.	Dimensions [mm]	
		Ø Diameter	Length A
MasterBar – Spindle Test Arbor			
BT+ 30/MBA 32 x 235	7551.30600	32	235
BT+ 40/MBA 40 x 340	7551.40600	40	340





REGO-FIX AG

Obermattweg 60 / 4456 Tenniken / Switzerland

www.rego-fix.com

036200397_Flyer BT+ ENG 2402