



## TORCO-BLOCK

Fast and accurate tool assembly with any wrench

### PRECISE

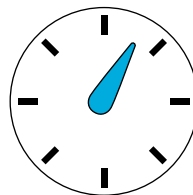
Never over-torque your toolholders.

### REPRODUCIBLE

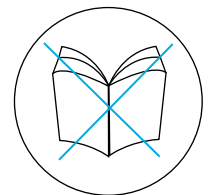
Tool run-out is guaranteed.

### TORCO-BLOCK

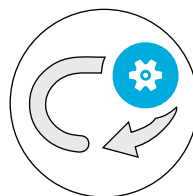
Safe and secure clamping of tools.



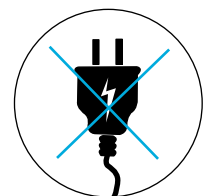
Integrated measurement  
in Nm or ft lb



No tables or torque  
charts needed



Toolholders are always  
clamped correctly



No electricity required

# Why should you use TORCO-BLOCK?

Safe and easy tool-clamping for all available collet systems



## Torque Value Charts

Finding the right tightening torque for your ER system is complicated. All ER manufacturers highly recommend to respect the correct tightening force in order to get best TIR run-out. With TORCO-BLOCK, forget about torque charts and endless searches!

Recommended tightening torque for ER and MR clamping nuts  
Maximum torques for retention knobs (Nm)

Collet size	ER/ERC		ERB/ERBC		ERM/ERMC		ERNA/ERNBC		ERAK/ERAKC		ER MS	
	ER	ERC	ERB	ERBC	ERM	ERMC	ERNA	ERNBC	ERAK	ERAKC	ER	MS
1.5-2.9	0.0078-0.035											
3.0-7.0	0.039-0.098	8										
0.2-0.9	0.118-0.256	24	16									
1.0	0.0078-0.035	8										
1.5-3.5	0.039	8		6.4								
4.0-4.5	0.059-0.138	20										
5.0-10.0	0.157-0.177	40	32									
ER 20	0.197-0.394	5	4	56								
1.5-4.5	0.039			12								
7.0-13.0	0.059-0.256	32	32	24								
1.0-3.0	0.276-0.512	80	35	80								
4.0-4.5	0.059-0.138	24		20								
5.0-7.5	0.157-0.177	56	56	48								
10-17.0	0.315-0.295	80	80									
ER 50	0.078-0.098	24										

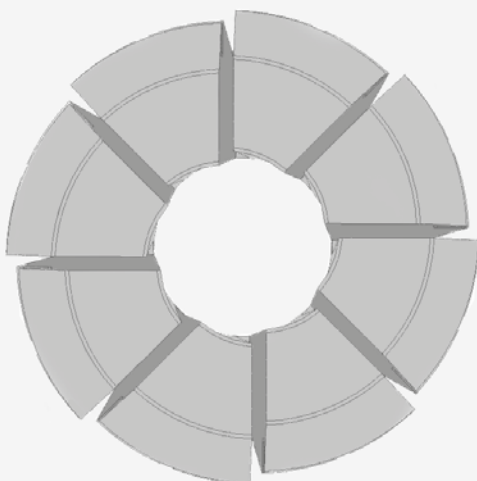
## Torque Wrenches

Clamping your ER nut on a TORCO-BLOCK can be done with literally any standard wrench or spanner. No expensive torque wrenches or other equipment is needed anymore!



## ER Collet Torsion

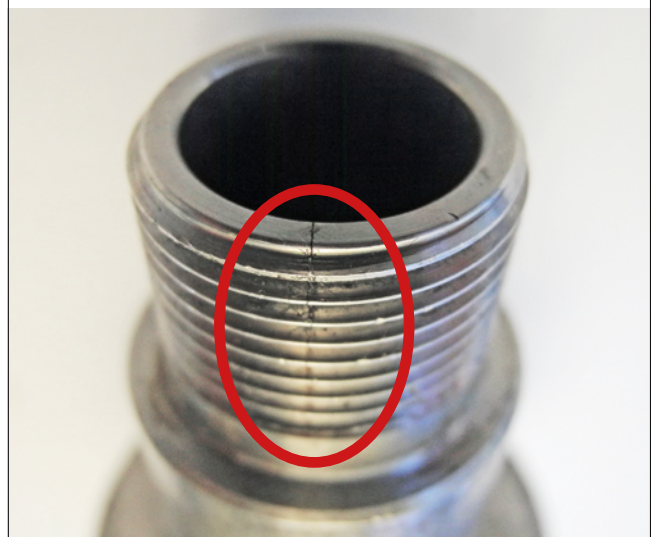
Overtorquing an ER system will negatively impact the TIR run-out. Your ER collet will twist and distort under the compression. Don't waste your good ER system because of faulty usage!



Collet top view

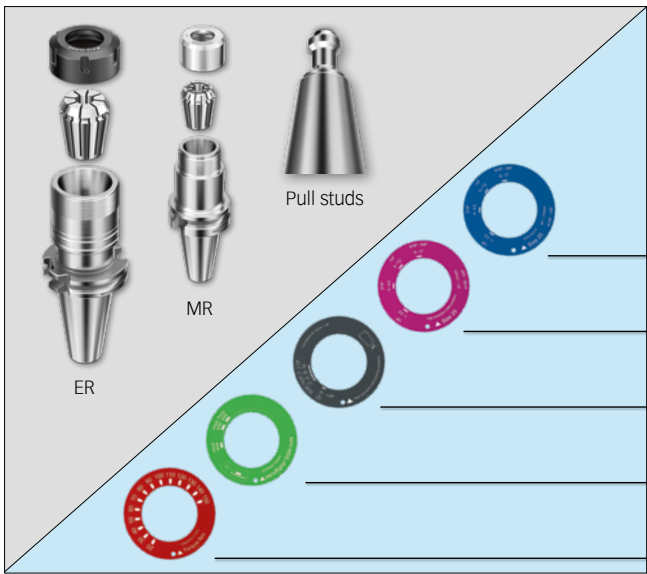
## Damaged Holders

The threaded head of an ER toolholder is designed and manufactured for a specific clamping strength. Overtorquing will eventually provoke hairline cracks or even cracked holders. Respect the right tightening torque thanks to TORCO-BLOCK!



**TORCO-BLOCK** The only tool assembly device in the market that is comfortable to use with integrated torque measuring. Usability is given for all collet based systems and available for standard machine interfaces.

### TORCO-BLOCK – Collet systems



- // Correct tightening torques, per tool shank diameter and collet size
- // Measuring scale up to 150 Nm / 110 ft lb
- // TORCO-BLOCK is supplied with scale rings TB / IR
- // Also suitable for mounting pull studs
- // Mounting of powRgrip® secuRgrip® SGN nut

ER/ERM systems

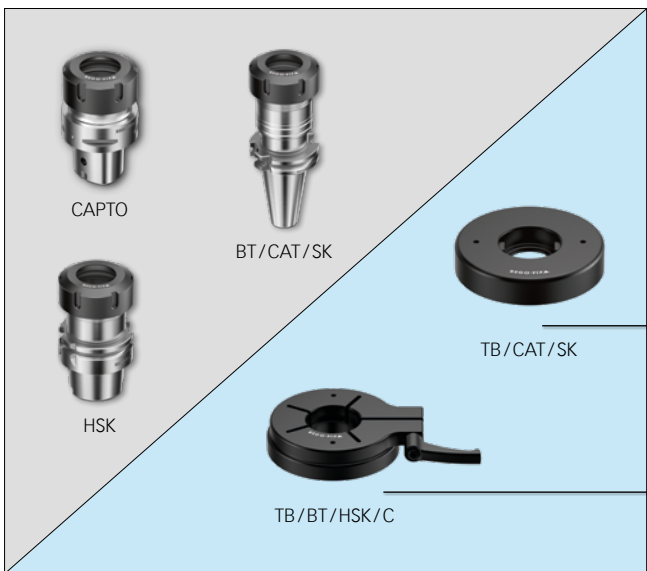
MR micRun® systems

Ball bearing systems

For powRgrip® secuRgrip® SGN nut

Torque display in Nm or ft lb

### TORCO-BLOCK – Spindle interfaces

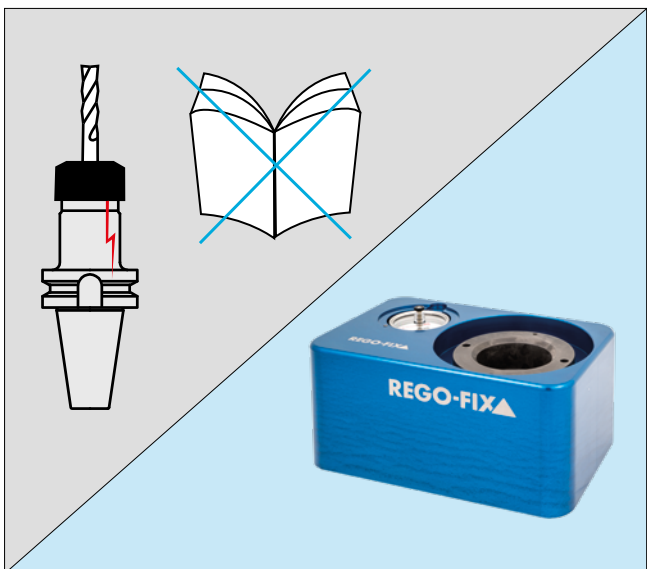


- // Easy change of tool holders and adapters
- // Available for most common spindle interfaces
- // Overhanging mounting of the TORCO-BLOCK on a workbench possible

Tool adapters for BT / CAT / SK spindle interfaces, sizes 30 to 50

Tool adapters for HSK + REGO-FIX CAPTO, sizes 25 to 100 and C3 to C6

### TORCO-BLOCK – Advantages



- // Standard clamping spanners instead of torque wrenches and different clamping wrench heads
- // Fast clamping, as all relevant information is available on the scale rings
- // Correct clamping of the pull stud increases tool concentricity



Including set of 11 rings

# TORCO-BLOCK and it's components

Type	Part no.
<b>Tool assembly with torque measurement</b>	
TORCO-BLOCK	7815.00000

Included in delivery: TORCO-BLOCK and indicator ring set (no tool adapters).

<b>Indicator ring set / 11 rings</b>	
SET TB/IR	7816.99999

<b>Tool adapter for CAT spindle interfaces</b>	
TB/BT 30 + CAT 30	7816.30100
TB/SK 40 + CAT 40	7816.40200
TB/CAT 50	7816.50300

<b>Tool adapter for SK spindle interface</b>	
TB/SK 30	7816.30200
TB/SK 40 + CAT 40	7816.40200
TB/SK 50	7816.50200

<b>Tool adapter for BT spindle interface</b>	
TB/BT 30 + CAT 30	7816.30100
TB/HSK 63 + C6 + BT 40	7816.63500
TB/HSK 100 + BT 50	7816.00500

Type	Part no.
<b>Tool adapter for HSK + REGO-FIX CAPTO</b>	
TB/HSK 25	7816.25500
TB/HSK 32 + C3	7816.32500
TB/HSK 40 + C4	7816.40500
TB/HSK 50 + C5	7816.50500
TB/HSK 63 + C6 + BT 40	7816.63500
TB/HSK 80 + C8	7816.80500
TB/HSK 100 + BT 50	7816.00500

REGO-FIX CAPTO – licensed by Sandvik Coromant.

