

# The most reliable tool clamping for ceramics, carbide, graphite and glass

## RELIABLE

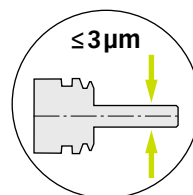
Highest runout accuracy and perfect vibration dampening.

## VERSATILE

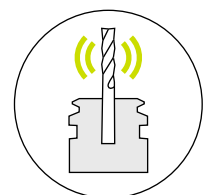
The right solution for specific applications – changed in seconds.

## PROTECTED

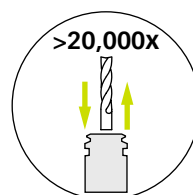
The new PG-SC collet for optimal protection of the toolholder from dust and other impurities.



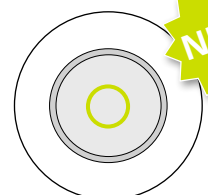
Total system runout TIR  
 $\leq 3 \mu\text{m}$  at 3 x D



Excellent vibration dampening



Maximum clamping force and low runout



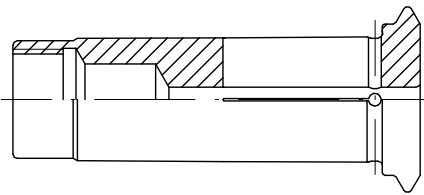
Sealed collets for protection from entering dust



## Performance and precision adapted to any application – within seconds

Machining demanding materials such as ceramics, sintered carbide, graphite or glass places high demands on tool and machine. The function of the toolholder as a connecting element is a fundamental part of efficient machining. In addition to the lowest and consistent runout, the vibration-dampening effect of powRgrip® also decisively benefits tool life and surface quality.

An additional challenge are the resulting chips and dust particles, which can enter into the smallest gaps and settle permanently. The newly developed PG-SC collets with completely closed heads prevent these deposits and guarantee a long service life and consistent performance..



Type	Sealed Cap (SC)
<b>PG 10</b>	<b>Part No.</b>
PG 10-SC Ø 3.00mm	8410.03004
PG 10-SC Ø 4.00mm	8410.04004

Type	Sealed Cap (SC)
<b>PG 15</b>	<b>Part No.</b>
PG 15-SC Ø 3.00mm	8415.03004
PG 15-SC Ø 4.00mm	8415.04004
PG 15-SC Ø 6.00mm	8415.06004
PG 15-SC Ø 8.00mm	8415.08004
PG 15-SC Ø 10.00mm	8415.10004
PG 15-TW Ø 12.00mm	1715.12006
PG 15-TW Ø 1/2"	1715.12706



Sealed Cap – CF with cooling channels available on request.



**Marvin Groeb, Application Engineering at KERN Microtechnik GmbH, Eschenlohe Germany**



„The REGO-FIX powRgrip® toolholding system is ideal for ceramic and hard machining, as they offer low runout, high clamping forces as well as excellent damping behavior. Further, the system offers optimal coolant supply in order to limit the heat which is required when machining ceramic materials.“

**Jens Boos, Managing Partner at 6C Tools AG, Zurich Switzerland**



„By combining REGO-FIX powRgrip® holders and 6C Tools PCD tools, it was possible to break new ground in ceramic and hard machining. Both the high concentricity and the always consistent clamping force led to an increase in productivity and an improvement in process reliability for our customers. The REGO-FIX powRgrip® holders are thus ideally suited for ceramic and hard machining.“