

Hi-Q®/ERMX intrRlox® and Hi-Q®/ERMXC intrRlox®

Patented slip-off proof mini clamping nuts

ER STANDARD

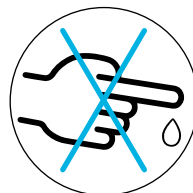
Compatible with any ER systems, independent of manufacturer.

COOLANT FLUSH

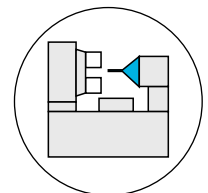
Suitable with available coolant flush and sealing disks.

INTRLOX®

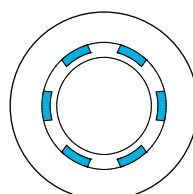
Patented slip-off safety with intelligent nut profile.



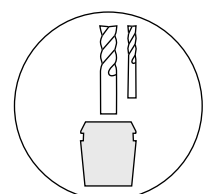
Safe handling thanks to the patented intrRlox® profile



Design is ideally suited for machines with limited space

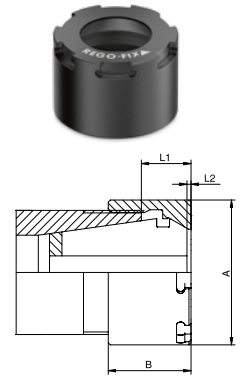


Interlocking design guarantees safe handling in tight spaces

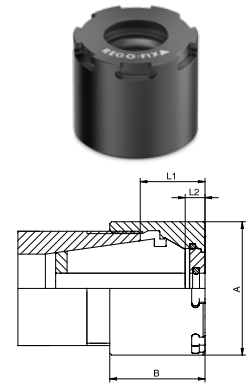


Covers ER 8 to ER 25, clamping range 0.2 - 17mm

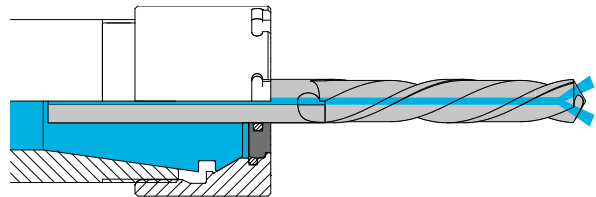
Type	Part no.	Dimensions [mm]				C	Accessory
		A	B	L1	L2		Wrench
Hi-Q®/ERMX							
Hi-Q®/ERMX 8	3508.60000	12	11	4.3–6.1	0.4	M 10 x 0.75	E 8 MX
Hi-Q®/ERMX 11	3511.60000	16	12	5.7–7.5	0.4	M 13 x 0.75	E 11 MX
Hi-Q®/ERMX 16	3516.60000	22	18.4	8.0–11.5	0.9	M 19 x 1	E 16 MX
Hi-Q®/ERMX 20	3520.60000	28	19	8.0–11.5	0.0	M 24 x 1	E 20 MX
Hi-Q®/ERMX 25	3525.60000	35	20	8.5–12.0	0.0	M 30 x 1	E 25 MX



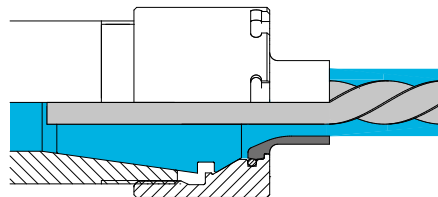
Type	Part no.	Dimensions [mm]				C	Accessory
		A	B	L1	L2		Wrench
Hi-Q®/ERMXC							
Hi-Q®/ERMXC 11	3511.70000	16	14.6	7.5–9.3	3.5	M 13 x 0.75	E 11 MX
Hi-Q®/ERMXC 16	3516.70000	22	22.5	11.5–15.0	4.5	M 19 x 1	E 16 MX
Hi-Q®/ERMXC 20	3520.70000	28	24	13.0–16.5	5	M 24 x 1	E 20 MX
Hi-Q®/ERMXC 25	3525.70000	35	25	13.0–17.0	5	M 30 x 1	E 25 MX



Type	Dimensions [mm]
DS/ER Sealing Disks	
DS/ER 11	3.00–6.00
DS/ER 16	2.50–10.00
DS/ER 20	2.50–13.00
DS/ER 25	2.50–16.00



Type	Dimensions [mm]
KS/ER Coolant Flush Disks	
KS/ER 11	3.00–6.00
KS/ER 16	3.00–10.00
KS/ER 20	3.00–12.00
KS/ER 25	3.00–16.00



Type	Clamping range [mm]
ER Collets	
ER 8/ER 8-UP	0.20–5.00
ER 11/ER 11-UP	0.20–7.00
ER 16/ER 16-UP	0.20–10.00
ER 20/ER 20-UP	0.50–13.00
ER 25/ER 25-UP	0.50–17.00

Expert advice

Rego-Fix also stocks:

- // DM Collets
- // ET1 Collets
- // GB Collets

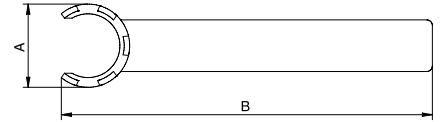
Application with sealing disk / coolant flush disk

The Hi-Q®/ERMXC clamping nut is intended for use with the sealing disk system DS/ER and the coolant flush system KS/ER. The disk system allows the use of all standard ER collets, ultraprecision collets and tapping collets for coolant through tools.

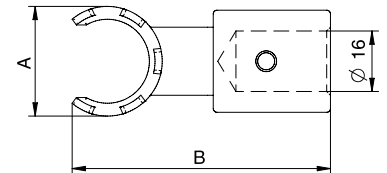
- // Up to 150 bar / 2100 PSI coolant pressure
- // Prevents dirt and chips from entering the collet

Accessories are not included in delivery.

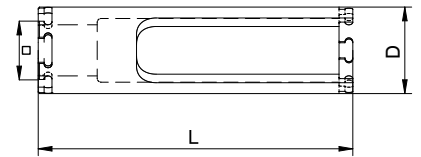
Type	Part no.	A [mm]	B [mm]
E MX			
E 8 MX	7118.08000	12	74
E 11 MX	7118.11000	17	95
E 16 MX	7118.16000	22.5	117
E 20 MX	7118.20000	29	129
E 25 MX	7118.25000	36	141



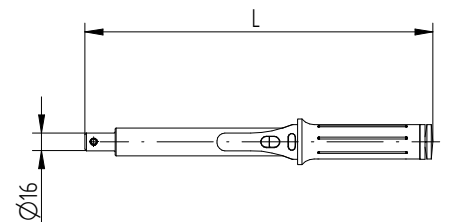
Type	Part no.	A [mm]	B [mm]
A-E MX			
A-E 8 MX	7158.08000	12	53
A-E 11 MX	7158.11000	17	54
A-E 16 MX	7158.16000	22	56
A-E 20 MX	7158.20000	29	68
A-E 25 MX	7158.25000	36	70



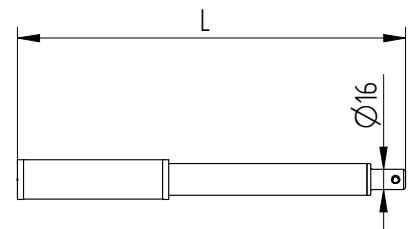
Type	Part no.	D [mm]	L [mm]	Square □	
				[mm]	[inch]
V-E MX					
V-E 8 MX	7159.08000	17	60	6.35	1/4"
V-E 11 MX	7159.11000	17	60	6.35	1/4"
V-E 16 MX	7159.16000	22.5	80	6.35	1/4"
V-E 20 MX	7159.20000	29	95	12.7	1/2"
V-E 25 MX	7159.25000	35	105	19.05	3/4"



Type	Part no.	L1 [mm]	Range [Nm]	Range [ft-lbs]
TORCO-FIX				
TORCO-FIX 0	7150.02025	290	5–25	3.5–18
TORCO-FIX I	7150.05050	335	10–50	7.5–36.5
TORCO-FIX II	7150.20200	465	40–200	26.5–147
TORCO-FIX III	7150.60300	565	60–300	44.5–221



Type	Part no.	L1 [mm]
Grip bar for wrench heads G-A		
G-A	7655.99900	308
G-AS	7655.99500	120



Expert advice

BLANK DS + KS / ER are available and can be used as machining blank for specific sizes or as sealing disk for double-sided driven tools.

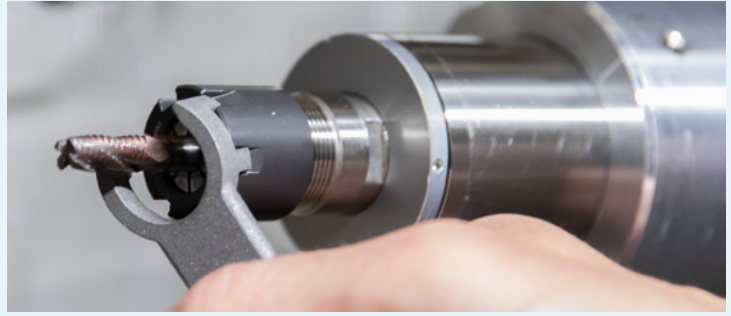


Swiss quality standard

Our products marked Swiss made are manufactured at our headquarters in Tenniken, Switzerland.



// The mini clamping nut **Hi-Q®/ERM** is used where minimal external diameters are essential (e.g., machining space is very limited). The wrench design is not interlocking.



// Safe handling thanks to the patented **intRlox®** profile and lock-in wrench.

// Slip-off proof design with all advantages of the regular mini clamping nuts.



„Say goodbye to smashed knuckles, gashed fingers, and lost productivity“.

Size	Ø [mm]	Ø [Decimal inch]	ERMX/ERMXC [Nm]	
			ER/ER-UP	TORCO-FIX
Torque Chart				
ER 8 MB	0,2–0,9	0,0078–0,035	6	0
ER 8	1,0–5,0	0,039–0,196	6	0
ER 11 MB	0,2–0,9	0,0078–0,035	8	0
ER 11	1,0–2,9	0,039–0,098	8	0
	3,0–7,0	0,118–0,256	16	0,1
	ER 16 MB	0,2–0,9	0,0078–0,035	8
ER 16	1,0	0,039	8	0
	1,5–3,5	0,059–0,138	20	0,1
	4,0–4,5	0,157–0,177	24	0,1
	5,0–10,0	0,197–0,394	24	0,1
ER 20	1,0	0,039	16	0,1
	1,5–6,5	0,059–0,256	28	1
	7,0–13,0	0,276–0,512	28	1
ER 25	1,0–3,5	0,059–0,138	24	0,1
	4,0–4,5	0,157–0,177	32	1
	5,0–7,5	0,196–0,295	32	1
	8,0–17,0	0,315–0,669	32	1